

Do Not Use if breakable ring is separated or missing.
Packaged with Tamper-Evident bottle cap.

Children's

Robitussin

Elderberry



Drug Facts

Active ingredients (in each 20 mL)

Dextromethorphan HBr 20 mg Cough suppressant
Guaifenesin 400 mg Expectorant

Uses

- temporarily relieves cough due to minor throat and bronchial irritation as may occur with a cold
- helps loosen phlegm (mucus) and thin bronchial secretions to drain bronchial tubes

Warnings

Do not use if you are now taking a prescription monoamine oxidase inhibitor (MAOI) (certain drugs for depression, psychiatric, or emotional conditions, or Parkinson's disease), or for 2 weeks after stopping the MAOI drug. If you do not know if your prescription drug contains an MAOI, ask a doctor or pharmacist before taking this product.

Ask a doctor before use if you have

- cough that occurs with too much phlegm (mucus)
- cough that lasts or is chronic such as occurs with smoking, asthma, chronic bronchitis, or emphysema

Stop use and ask a doctor if cough lasts more than 7 days, comes back, or is accompanied by fever, rash, or persistent headache.

These could be signs of a serious condition.

Purposes

Drug Facts (continued)

If pregnant or breast-feeding, ask a health professional before use.

Keep out of reach of children. In case of overdose, get medical help or contact a Poison Control Center right away.

Directions

- do not take more than 6 doses in any 24-hour period
- measure only with dosing cup provided
- keep dosing cup with product ■ mL = milliliter

age	dose
children under 4 years	do not use
children 4 to under 6 years	5 mL every 4 hours
children 6 to under 12 years	10 mL every 4 hours
adults and children 12 years and over	20 mL every 4 hours

Other information

- each 20 mL contains: potassium 5 mg, sodium 21 mg
- store at 20-25°C (68-77°F). Do not refrigerate.

Inactive ingredients

anhydrous citric acid, black elderberry juice concentrate (for flavor), carboxymethylcellulose sodium, glycerin, liquid glucose, maltodextrin, natural and artificial flavors, polyethylene glycol, propylene glycol, purified water, sodium benzoate, sodium citrate, sodium gluconate, sucralose, xanthan gum, zinc gluconate

Questions or comments? call weekdays from 8 AM to 6 PM EST at 1-800-245-1040

Distributed by: Haleon, Warren, NJ 07059

©2023 Haleon group of companies or its licensor.

Trademarks are owned by or licensed to the Haleon group of companies.

For most recent product information, visit www.robitussin.com

Pat. Info www.productpats.com

Made in Canada

62000000206394

PARENTS:

Learn about teen medicine abuse

www.StopMedicineAbuse.org

Children's

Robitussin

Elderberry

Cough & Chest Congestion

DM

Children's

Robitussin

Elderberry



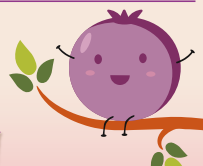
Cough & Chest Congestion

DEXTROMETHORPHAN HBr
(Cough Suppressant)
GUAIFENESIN (Expectorant)

DM

- ✓ Controls Cough
- ✓ Relieves Chest Congestion
- ✓ Thins & Loosens Mucus

Taste the
Real
Elderberry



4 FL OZ (118 mL)

For Ages 4+

Children's

Robitussin

Elderberry

This combination
blends the great taste
of real elderberries
with the powerful,
effective cough
relief of Robitussin.

Made
with
Real
ELDERBERRIES

- Gluten Free
- No Artificial Colors



85% FPO

3 0031 3018 70 0